

# Knižnica programu FluidSIM - HYDRAULIKA - 13 Relays :)

## Hydraulic

[Supply Elements 01/14](#)

[Actuators 02/7](#)

Valves

[Configurable directional valves 03/6](#)

Frequently Used Way Valves

[Mechanically Operated 04/11](#)

[Solenoid Operated 05/9](#)

[Shutoff Valves and Flow Control Valves 06/17](#)

[Pressure Control Valves 07/14](#)

[Proportional valves 08/9](#)

[Measuring instruments and Sensors 09/9](#)

Electrical controls

[Actuators 10/1](#)

[Power Supply 11/4](#)

[Measuring instruments and Sensors 12/8](#)

**Relays 13/9**

Switches

[Manually Operated 14/6](#)

[General Switches 15/3](#)

[Proximity Switches 16/4](#)

[Controller 17/3](#)

[Ladder Symbols 18/12](#)

[Digital Technique 19/28](#)

[EasyPort/OPC/DDE 20/2](#)

[GRAFCET 21/6](#)

[Miscellaneous 22/10](#)

## Relays

Relay

Relay with switch-on delay

Relay with switch-off delay

Relay counter

Valve solenoid

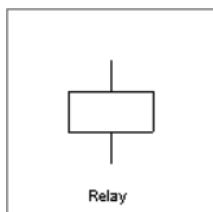
Proportional amplifier, 1-channel

Proportional amplifier, 2-channel

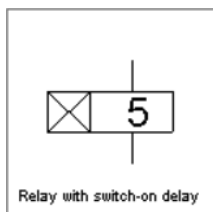
Proportional valve solenoid, position controlled

Starting current limiter

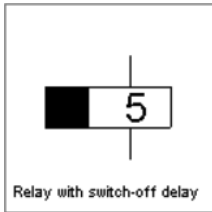
## Relays



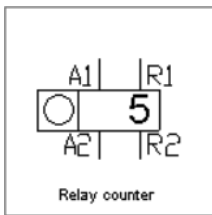
Relay



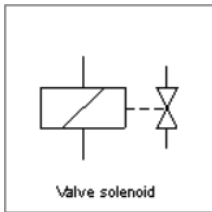
Relay with switch-on delay



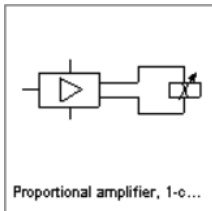
Relay with switch-off delay



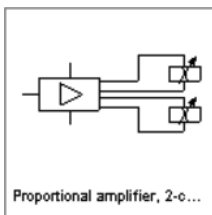
Relay counter



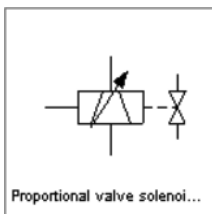
Valve solenoid



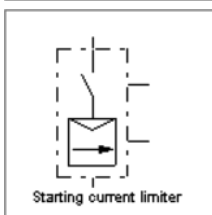
Proportional amplifier, 1-channel



Proportional amplifier, 2-channel



Proportional valve solenoid, position controlled



Starting current limiter